



# 2016 毕业生 就业质量年度报告

就业指导工作组

2016年6月

2016	.....	1
2016	.....	<b>2</b>
	.....	2
	.....	2
	.....	2
	.....	2
	.....	2
	.....	5
	.....	5
	.....	5
	.....	7
	.....	8
	.....	10
	.....	10
	.....	10
	.....	<b>13</b>
	.....	13
	.....	14
	.....	<b>21</b>
	.....	21
	.....	21
	.....	21
	.....	22
	.....	22
	.....	23
	.....	23
	.....	<b>25</b>
	.....	25
	.....	25

.....	25
.....	26
.....	27
.....	27
.....	27
.....	28
.....	28
.....	28
.....	29
.....	30
.....	<b>31</b>
.....	31
.....	32
.....	33
.....	<b>34</b>
.....	34
.....	34
.....	35
.....	35
.....	35

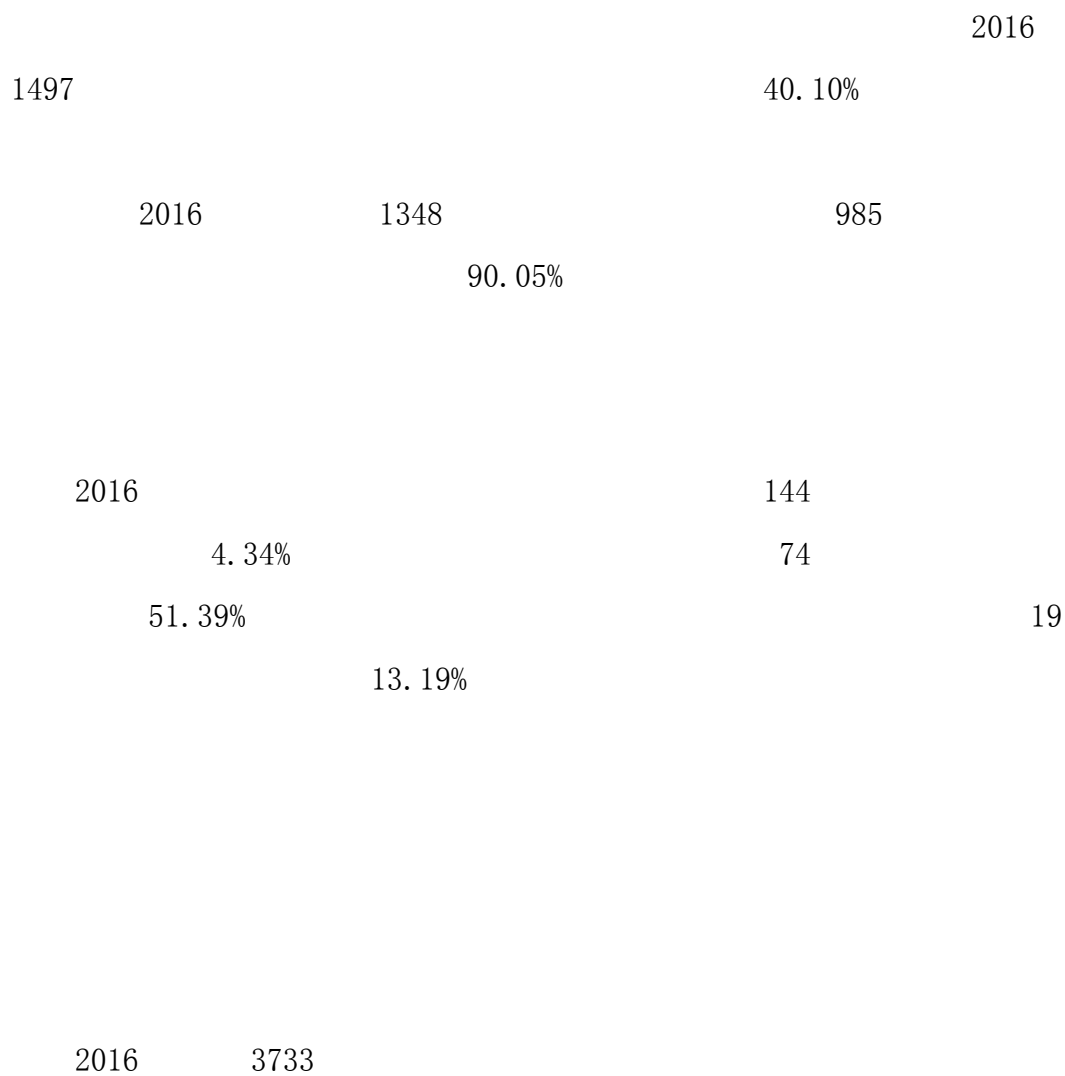
---

# 第一章 2016 年毕业生就业基本情况

2016		7445		64		0.87%	ê ð
	3733	3318		394			
		2530	1203		2.10	1	392
	2.47						

---

## 第二章 2016 年毕业生就业情况分析









46			5	0.59%
47			5	0.59%
48			5	0.59%
49			5	0.59%
50			5	0.59%

3318

74 2.23% 20

27.03% 12 16.22%

6 8.11%

3

4

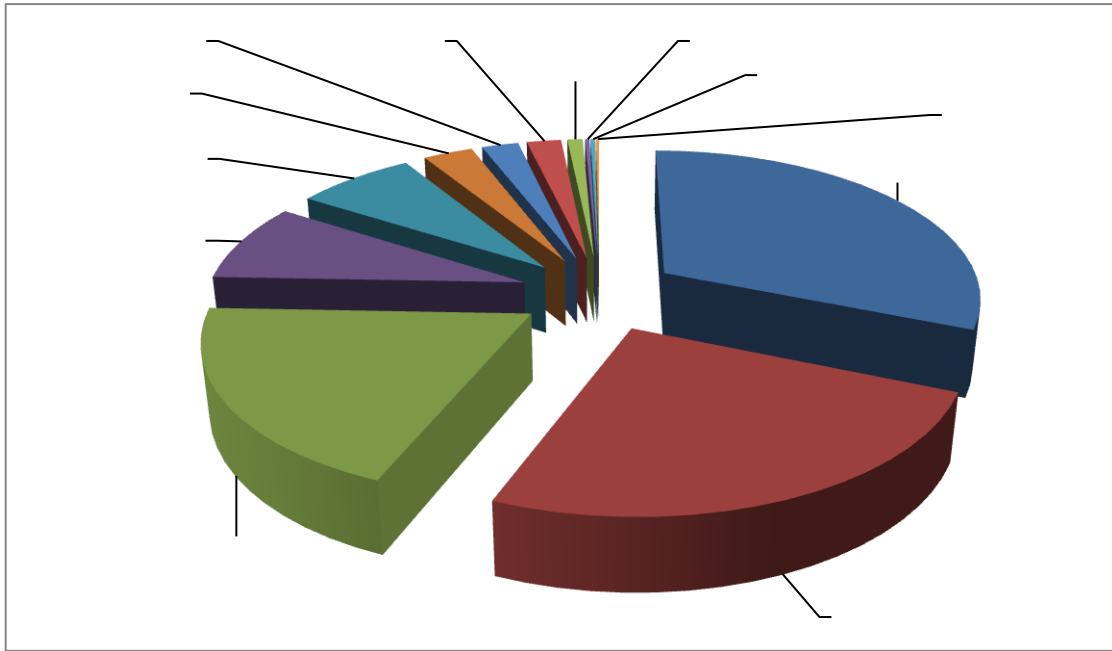
1.

2016 1281

431 33.65%







2

168

146

99

5

10

1		168
2		146
3		99
4		98
5		88
6		84
7		68
8		64
9		46
10		46

2016

787



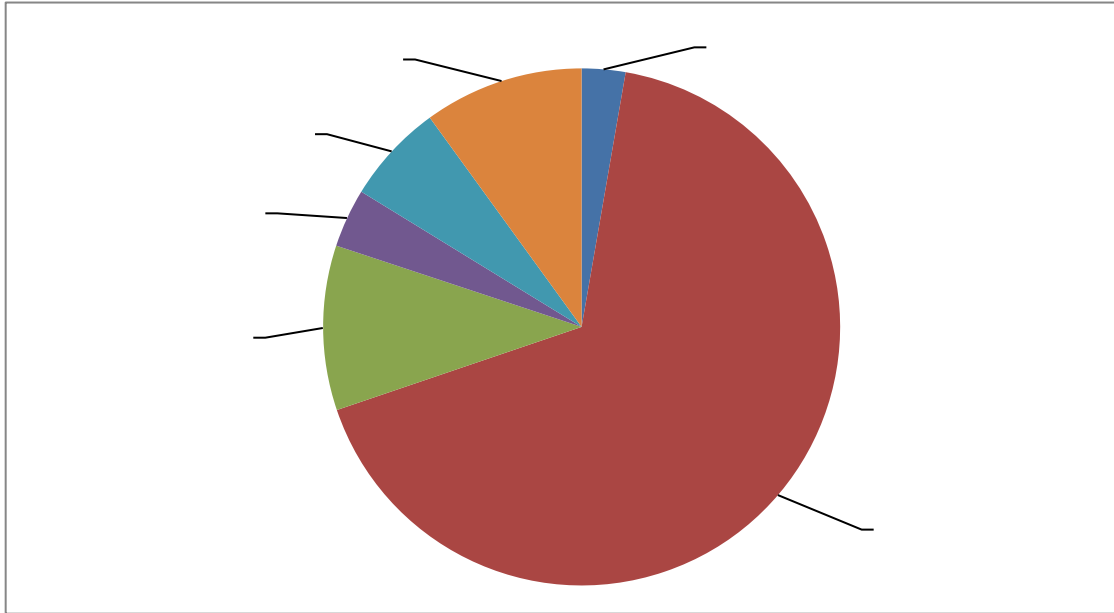
61.44%

1876

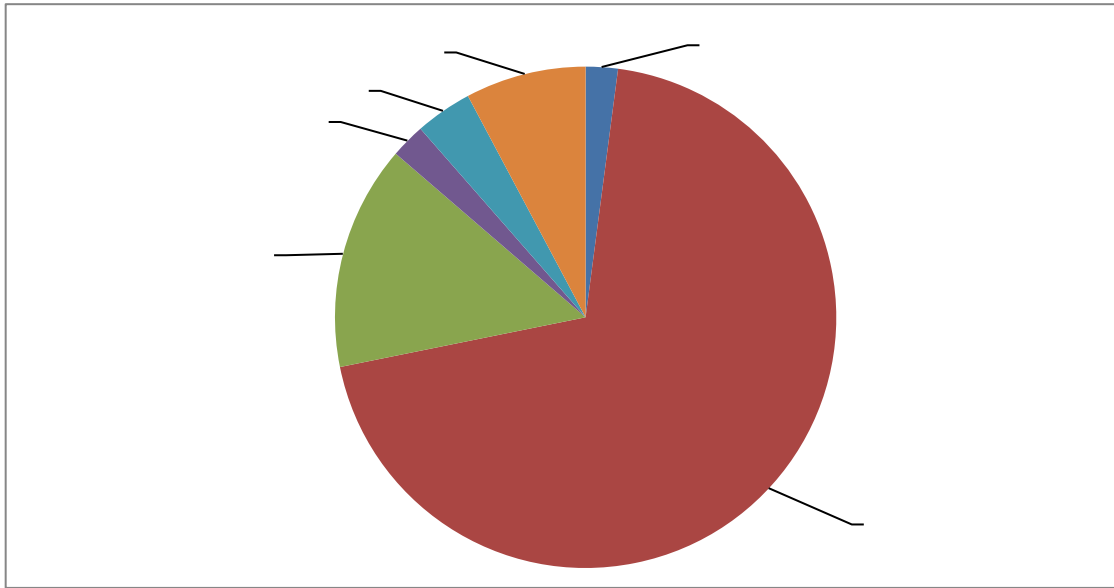
61.55%

19.13%

14.08%



3



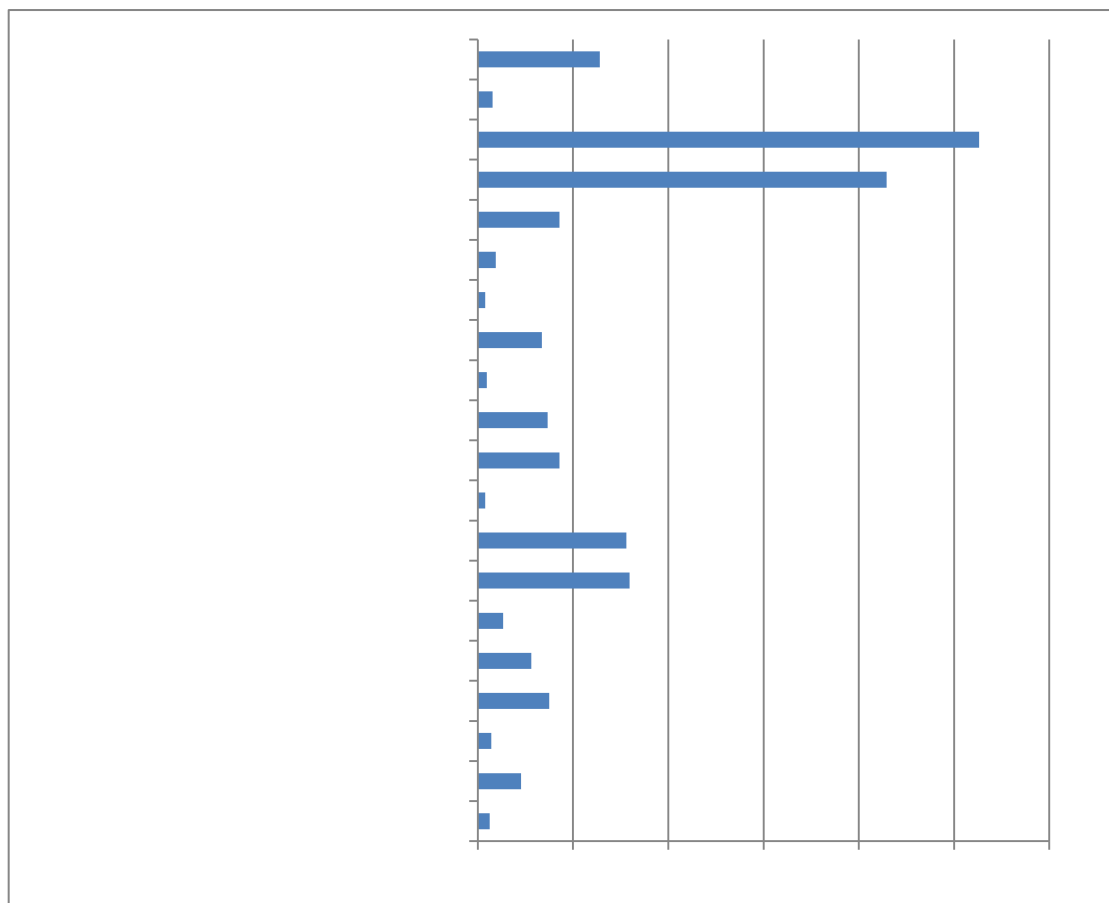
4

1.

26.31%

21.47%

7.96%



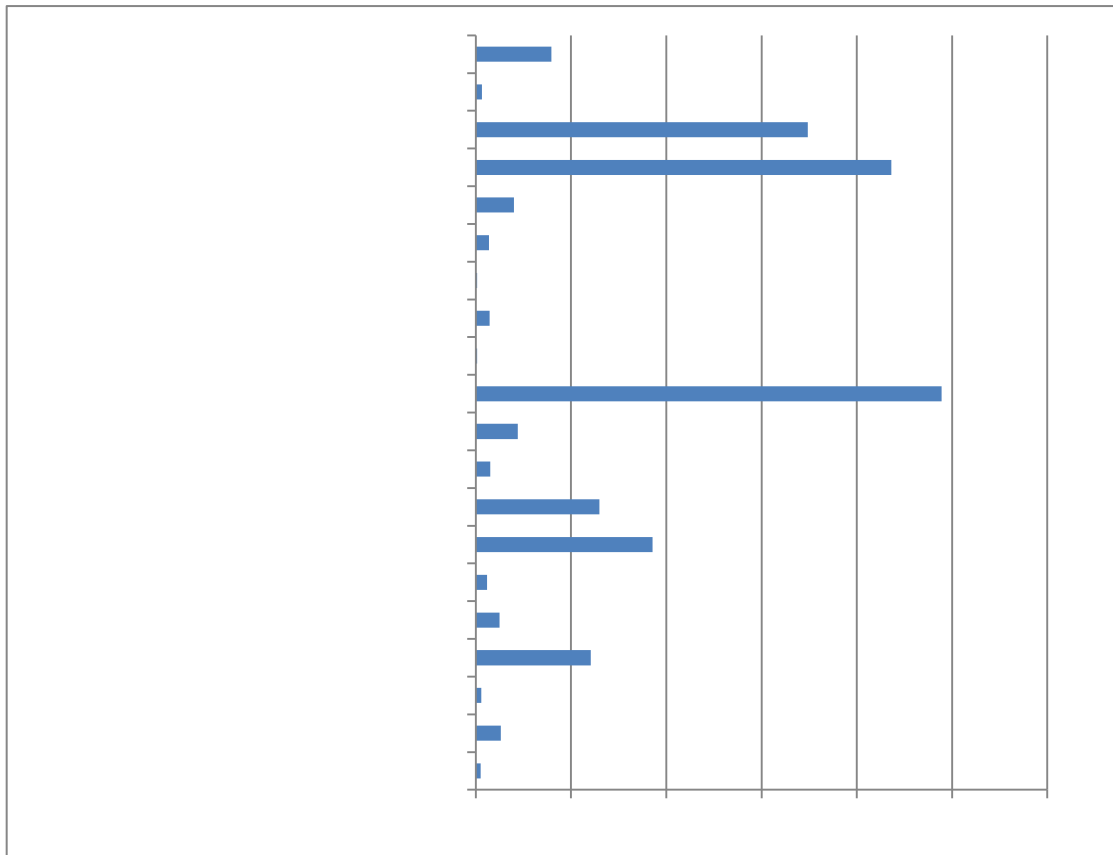
5

2.

24.44%

21.82%

17.42%



6

2016

80

127

2016

2016

36

31

5

21

15

2016



500

60%

2016

30

30

34.72%

6

1		178
2		151
3		127
4		104
5		102
6		92
7		84
8		68
9		60
10		53
11		46
12		46
13		42
14		37
15		32
16		29
17		27
18		25
19		25
20		22
21		20
22		19
23		18
24		16
25		15





### 第三章 分学院与分专业就业情况

7

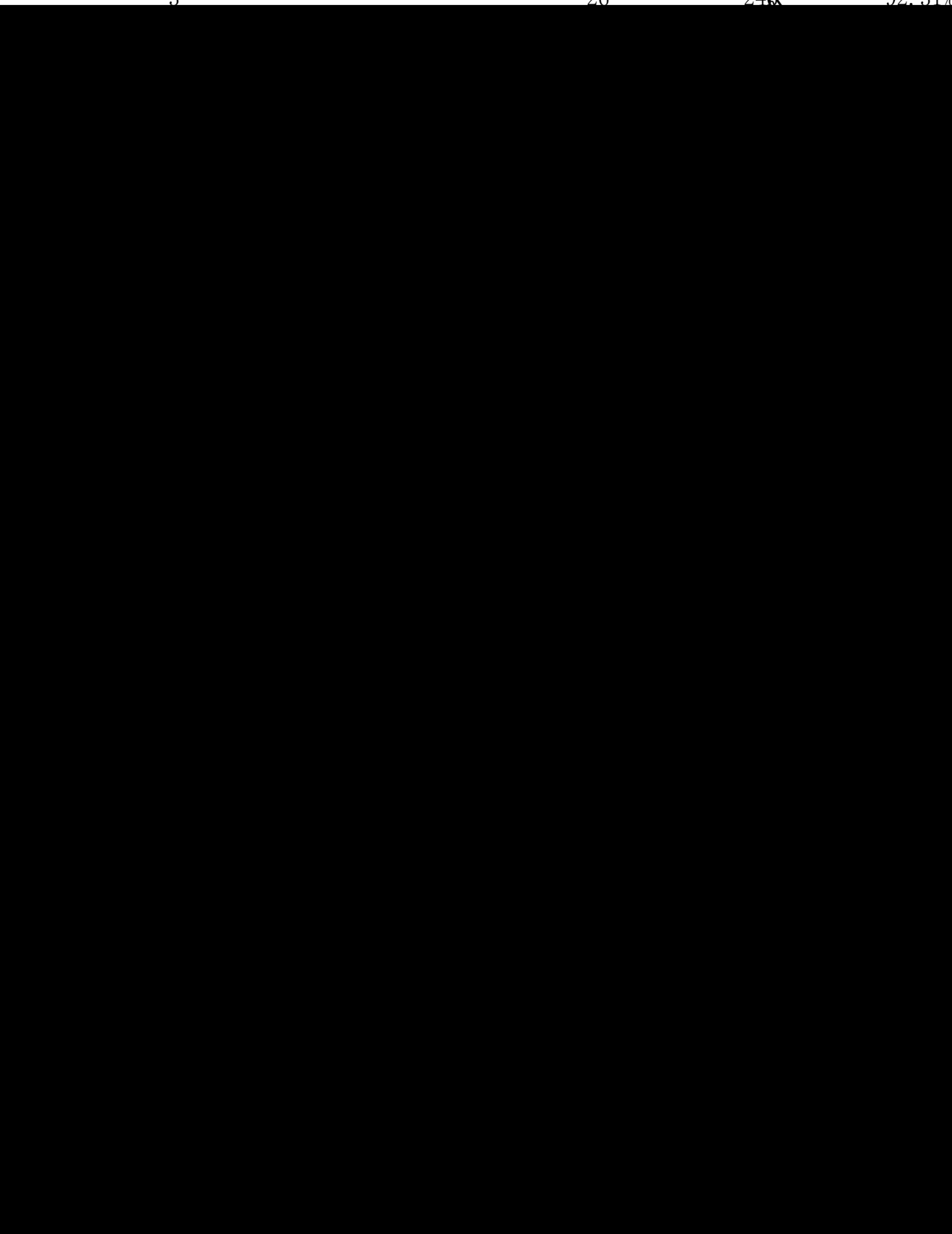
	231	96.10%	159	99.37%	43	100.00%
	231	97.84%	193	100.00%	80	100.00%
	470	97.87%	317	98.74%	75	97.33%
	232	99.57%	176	99.43%	39	100.00%
	492	98.37%	300	99.67%	52	100.00%
	283	100.00%	182	100.00%	32	100.00%
	211	96.21%	155	99.35%	38	100.00%
	185	99.46%	101	100.00%	/	/
	164	95.12%	139	100.00%	50	100.00%
	138	97.10%	86	95.35%	20	100.00%
	115	99.13%	73	100.00%	16	100.00%
	95	100.00%	39	100.00%	14	100.00%
	73	95.89%	38	97.37%	11	100.00%
	78	100.00%	54	92.59%	35	100.00%
	264	96.59%	426	97.18%	80	96.25%
	138	95.65%	34	94.12%	/	/
	96	98.96%	67	98.51%	/	/
	90	96.67%	42	95.24%	/	/
	147	97.28%	123	98.37%	2	100.00%
	/	/	16	75.00%	2	100.00%
	/	/	4	50.00%	/	/
	/	/	5	100.00%	/	/
	3733	97.83%	2729	98.46%	589	99.15%



---

8

1		23	21	91.30%
2		96	93	96.88%
3		26	24 <sup>3</sup>	92.31%





28		197	197	100.00%
29		162	157	96.91%
30		49	46	93.88%
31		185	184	99.46%
32		22	19	86.36%
33		24	24	100.00%
34		25	25	100.00%
35		22	22	100.00%
36		51	46	90.20%
37		20	20	100.00%
38		43	43	100.00%
39		40	39	97.50%
40		25	24	96.00%
41		30	28	93.33%
42		42	42	100.00%
43		19	19	100.00%
44		54	53	98.15%
45		34	34	100.00%
46		24	24	100.00%
47		37	37	100.00%
48		73	70	95.89%
49		26	26	100.00%
50		52	52	100.00%
51		41	37	90.24%
52		23	23	100.00%
53		135	132	97.78%
54		40	38	95.00%
55		2	2	100.00%
56		23	23	100.00%
57		108	105	97.22%



58		30	27	90.00%
59		96	95	98.96%
60		26	26	100.00%
61		18	17	94.44%
62		46	44	95.65%
63		34	33	97.06%
64		113	110	97.35%

## 9

1		84	84	100.00%
2		51	51	100.00%
3		48	48	100.00%
4		5	5	100.00%
5		15	15	100.00%
6		35	35	100.00%
7		96	95	98.96%
8		104	104	100.00%
9		49	48	97.96%
10		4	4	100.00%
11		154	152	98.70%
12		13	13	100.00%
13		107	106	99.07%
14		25	25	100.00%
15		12	12	100.00%
16		86	85	98.84%
17		129	129	100.00%
18		117	117	100.00%
19		2	2	100.00%
20		25	24	96.00%



21		68	68	100.00%
22		96	96	100.00%
23		52	51	98.08%
24		93	93	100.00%
25		104	104	100.00%
26		4	4	100.00%
27		37	37	100.00%
28		71	71	100.00%
29		12	12	100.00%
30		19	19	100.00%
31		21	21	100.00%
32		61	58	95.08%
33		11	10	90.91%
34		9	9	100.00%
35		18	18	100.00%
36		37	37	100.00%
37		8	8	100.00%
38		11	11	100.00%
39		4	4	100.00%
40		24	24	100.00%
41		38	37	97.37%
42		54	50	92.59%
43		229	222	96.94%
44		15	14	93.33%
45		44	43	97.73%
46		2	2	100.00%
47		5	5	100.00%
48		28	28	100.00%
49		10	10	100.00%
50		10	10	100.00%



51		18	17	94.44%
52		37	36	97.30%
53		12	12	100.00%
54		15	14	93.33%
55		1	1	100.00%
56		6	6	100.00%
57		14	13	92.86%
58		6	5	83.33%
59		7	7	100.00%
60		26	25	96.15%
61		7	7	100.00%
62		34	34	100.00%
63		22	21	95.45%
64		20	19	95.00%
65		26	26	100.00%
66		8	8	100.00%
67		65	64	98.46%
68		1	1	100.00%
69		23	22	95.65%
70		6	5	83.33%
71		14	12	85.71%
72		1	0	0.00%
73		4	2	50.00%

## 10

1		38	38	100.00%
2		1	1	100.00%
3		23	23	100.00%
4		1	1	100.00%



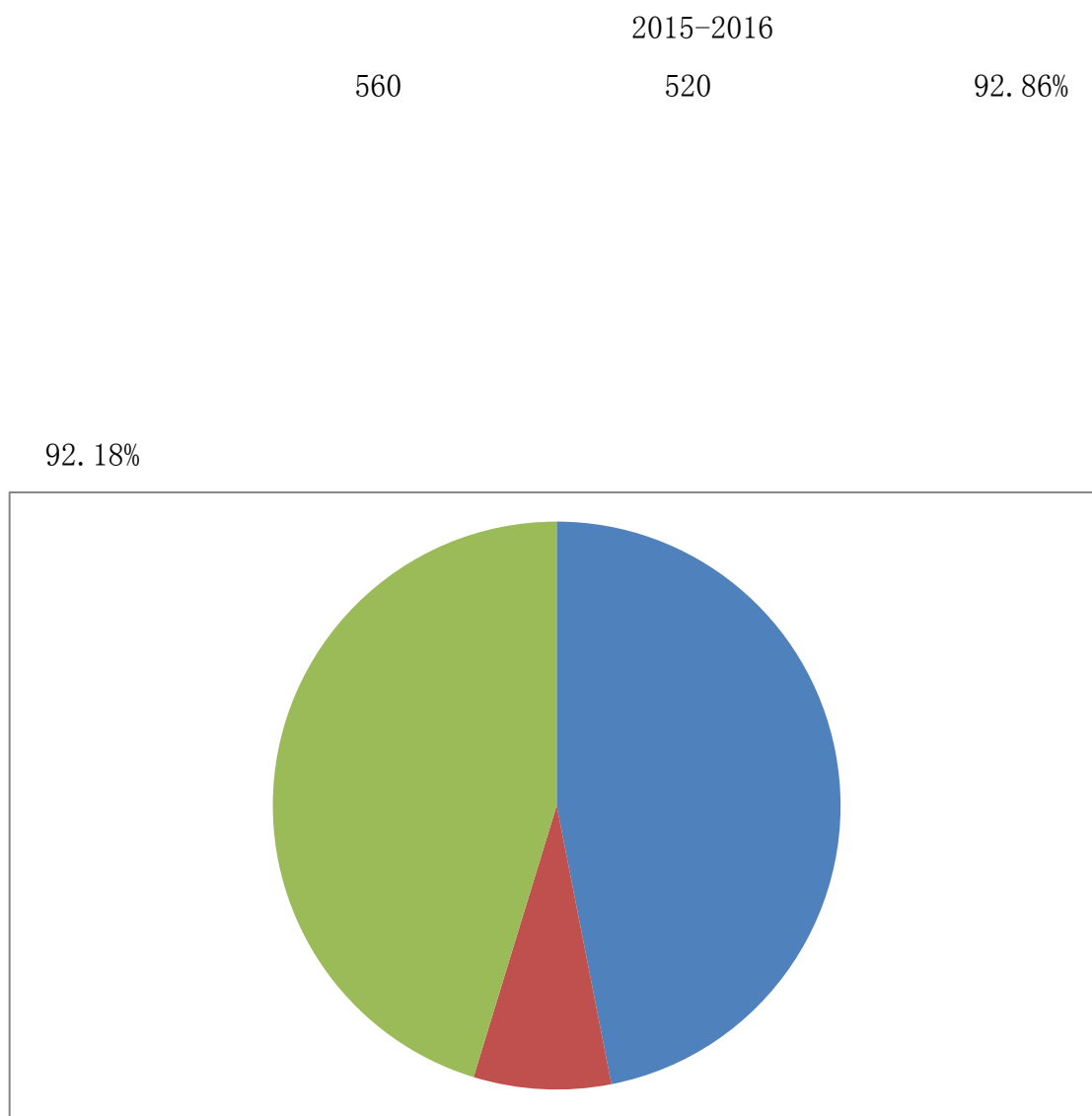
5		4	4	100.00%
6		37	37	100.00%
7		3	3	100.00%
8		1	1	100.00%
9		1	1	100.00%
10		17	17	100.00%
11		67	65	97.01%
12		1	1	100.00%
13		2	2	100.00%
14		3	3	100.00%
15		28	28	100.00%
16		7	7	100.00%
17		18	18	100.00%
18		2	2	100.00%
19		1	1	100.00%
20		3	3	100.00%
21		1	1	100.00%
22		31	31	100.00%
23		32	32	100.00%
24		1	1	100.00%
25		2	2	100.00%
26		12	12	100.00%
27		23	23	100.00%
28		1	1	100.00%
29		42	42	100.00%
30		8	8	100.00%
31		11	11	100.00%
32		1	1	100.00%
33		9	9	100.00%
34		14	14	100.00%



35		1	1	100.00%
36		10	10	100.00%
37		2	2	100.00%
38		2	2	100.00%
39		3	3	100.00%
40		8	8	100.00%
41		19	19	100.00%
42		8	8	100.00%
43		8	8	100.00%
44		6	6	100.00%
45		59	56	94.92%
46		12	12	100.00%
47		3	3	100.00%
48		2	2	100.00%



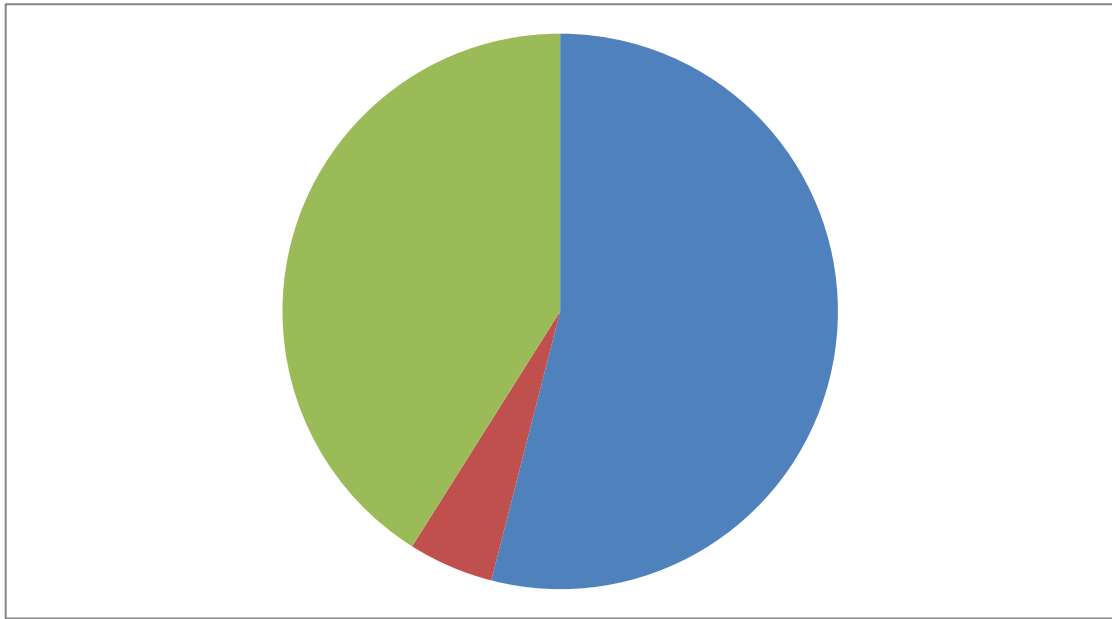
## 第四章 用人单位反馈



7

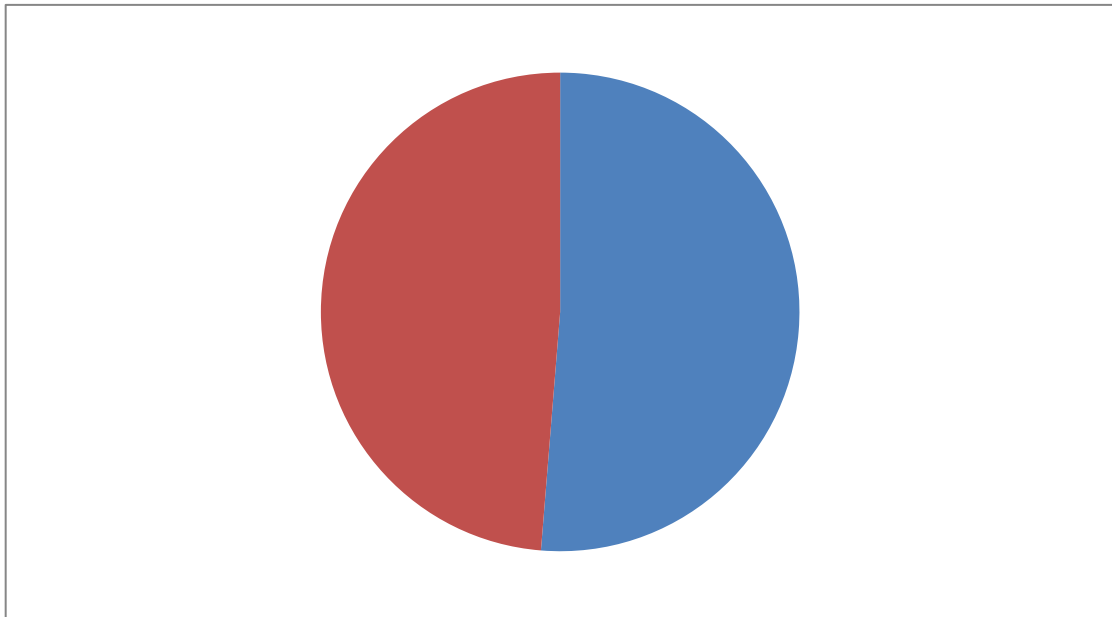
95.04%





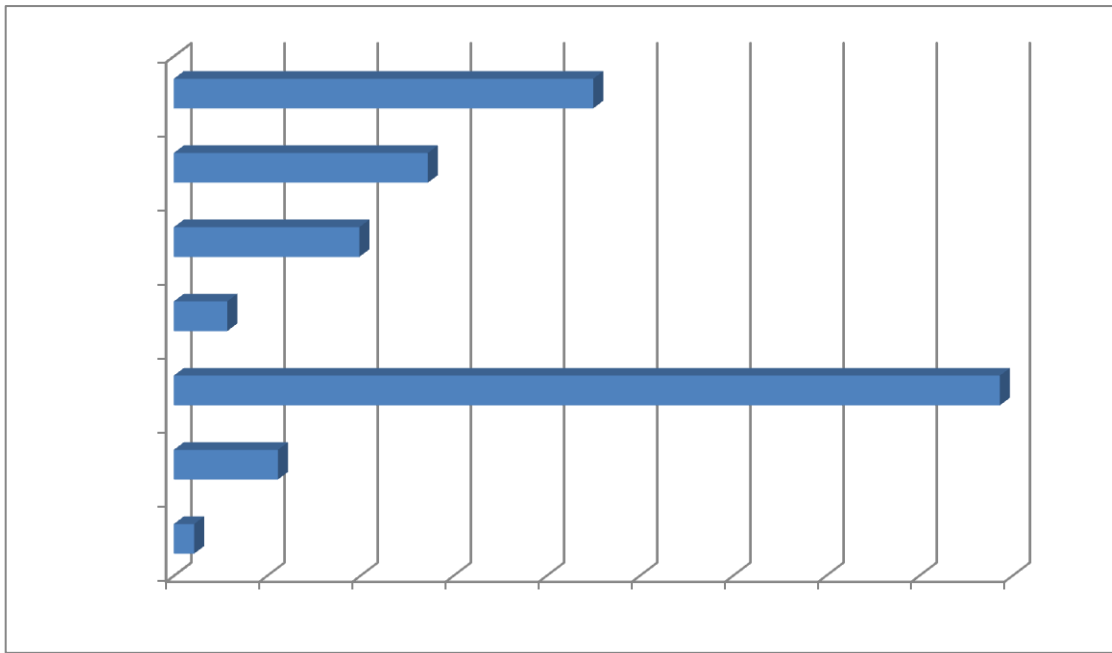
8

100%



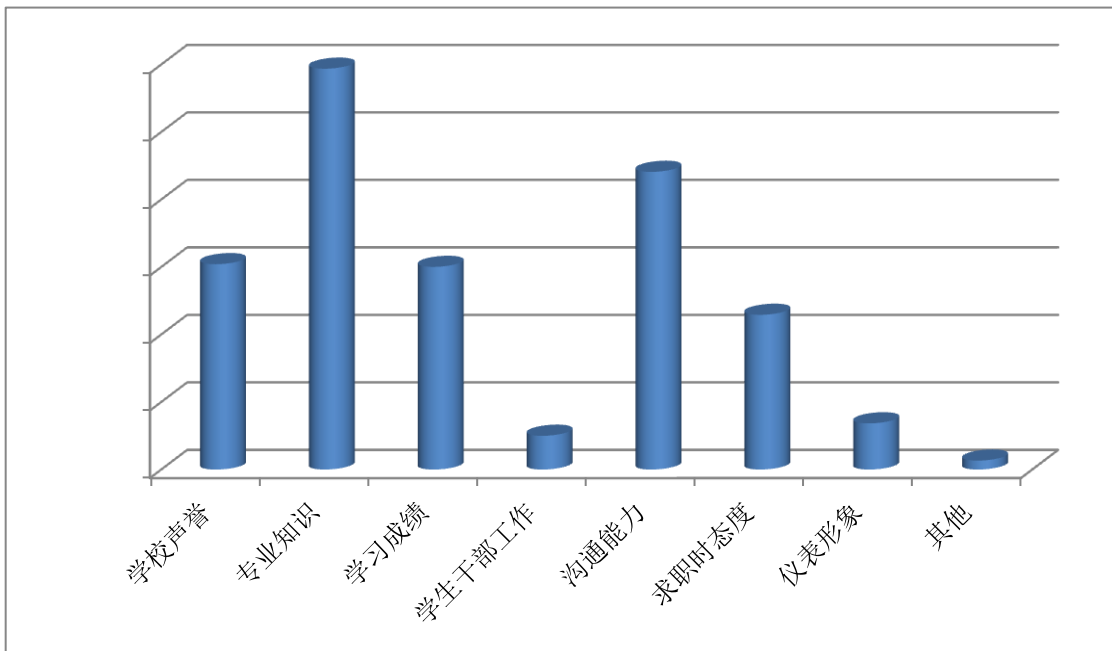
9

44.34% 22.51% 13.64%



10

22.05%                      15.21%                      15.01%                      29.69%



11



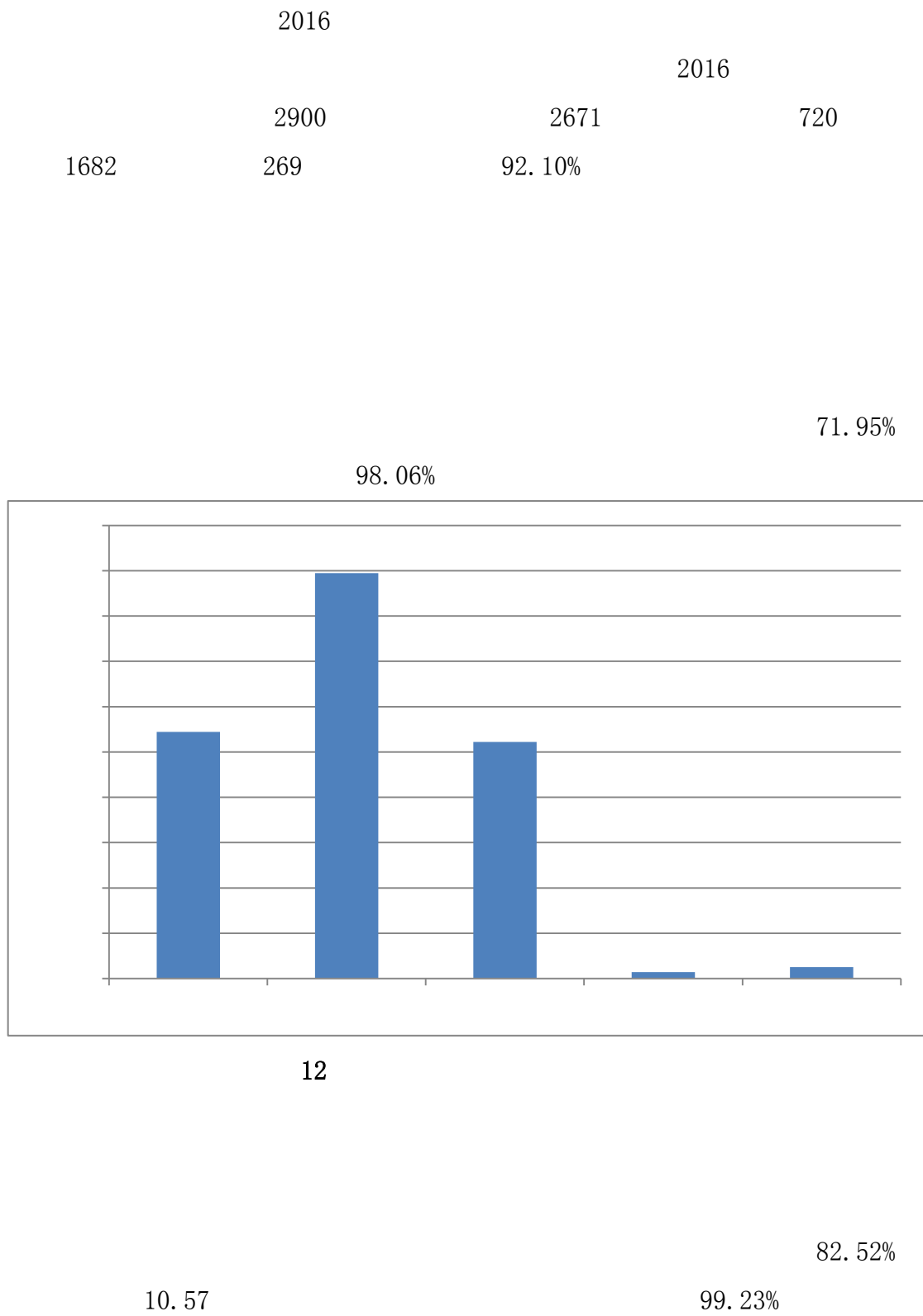
85%

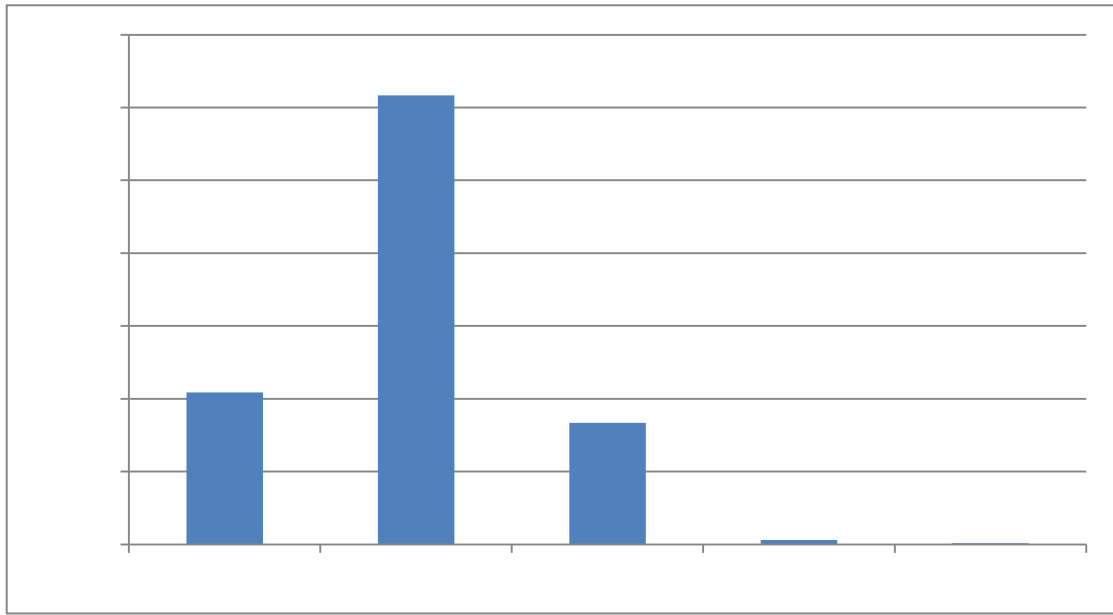
11

	43.35%	51.25%	5.40%	0.00%	0.00%
	43.71%	47.78%	8.51%	0.00%	0.00%
	31.01%	52.52%	15.69%	0.78%	0.00%
	53.09%	42.85%	3.67%	0.39%	0.00%
	35.59%	52.42%	11.60%	0.39%	0.00%
	41.05%	49.03%	9.14%	0.78%	0.00%
	34.62%	51.26%	13.35%	0.77%	0.00%
	36.63%	52.52%	10.27%	0.58%	0.00%
	35.85%	51.36%	11.63%	1.16%	0.00%
	28.74%	55.15%	15.53%	0.58%	0.00%
	43.08%	44.05%	12.28%	0.59%	0.00%
	37.72%	52.61%	8.51%	0.97%	0.19%
	24.47%	54.95%	18.64%	1.75%	0.19%
	26.07%	56.42%	15.95%	1.36%	0.20%



## 第五章 毕业生反馈



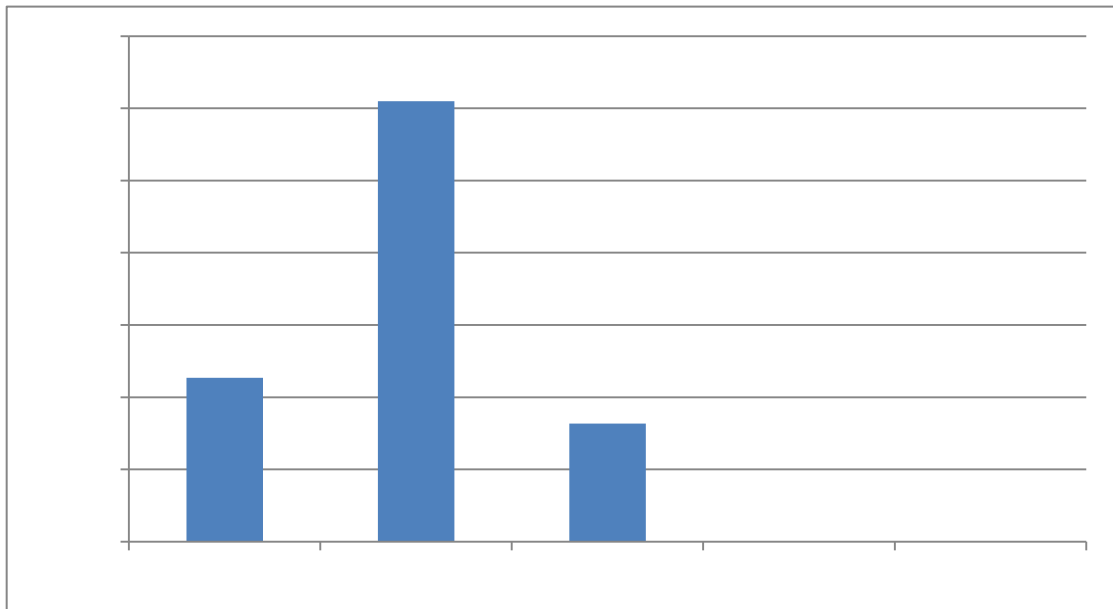


13

83.65%

1.13

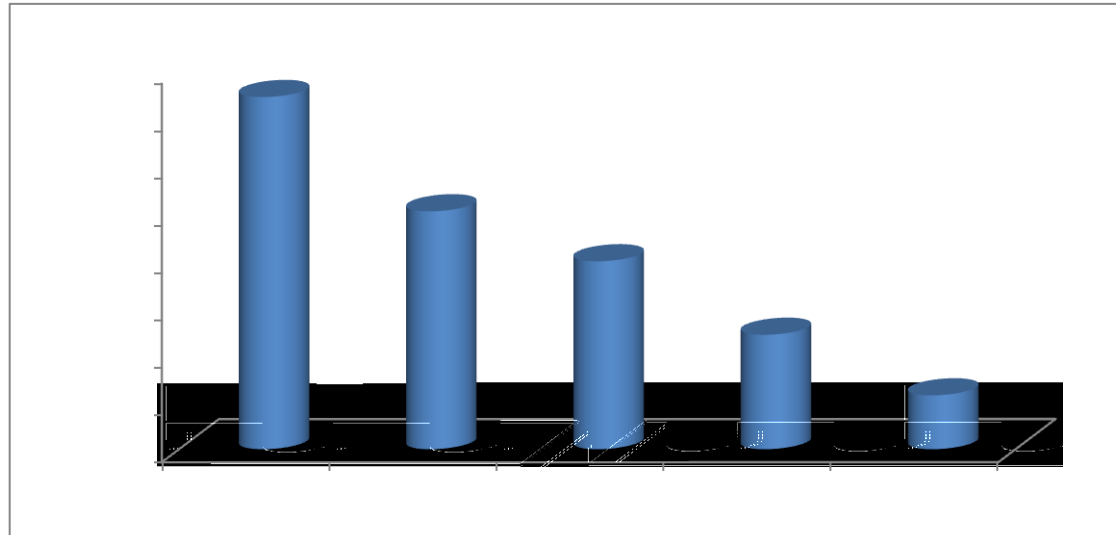
100%



14

2016

97.3%



11

7

15

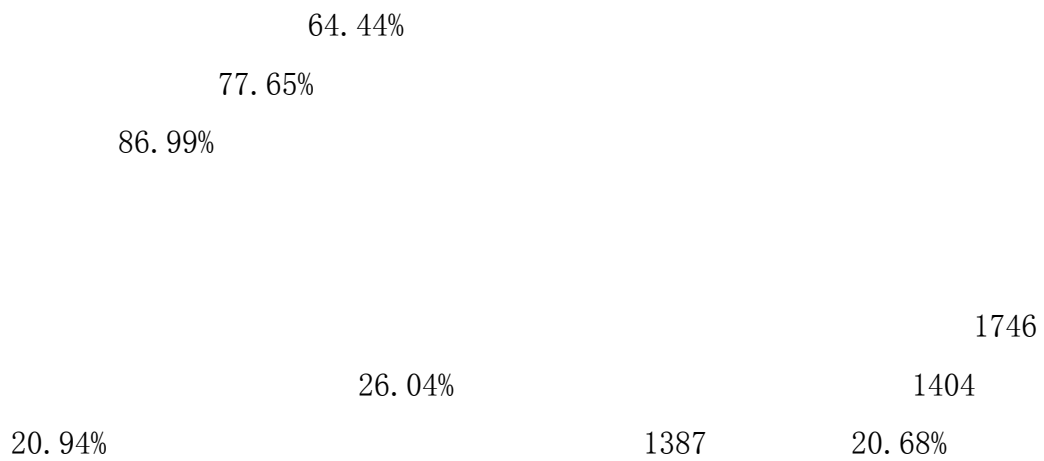
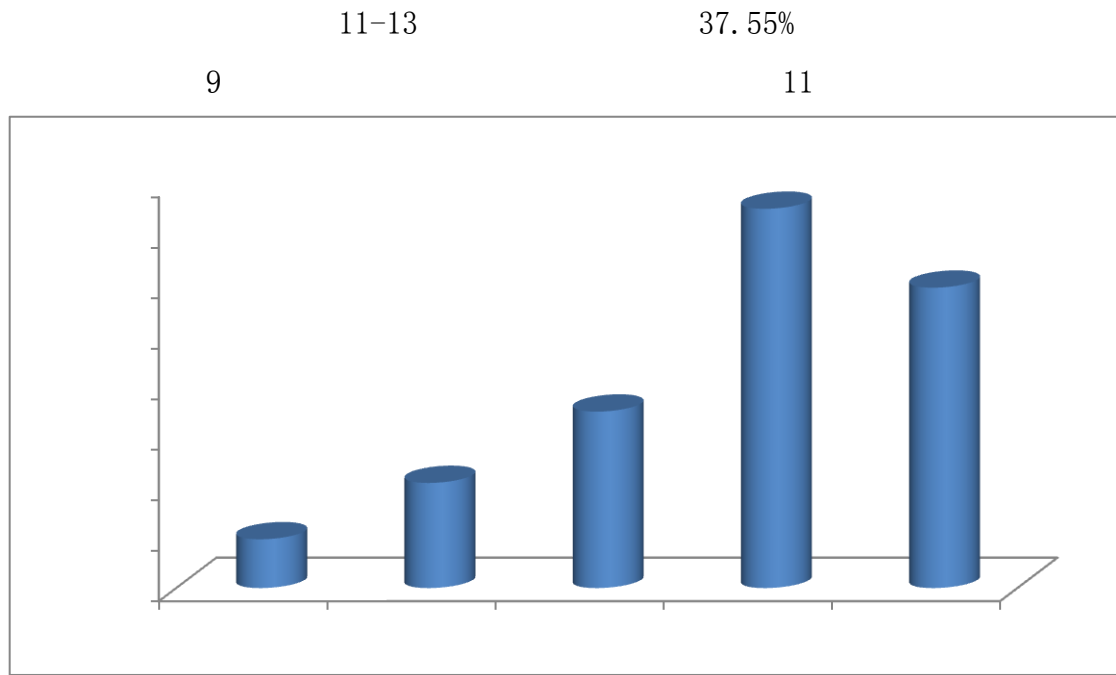
9-11

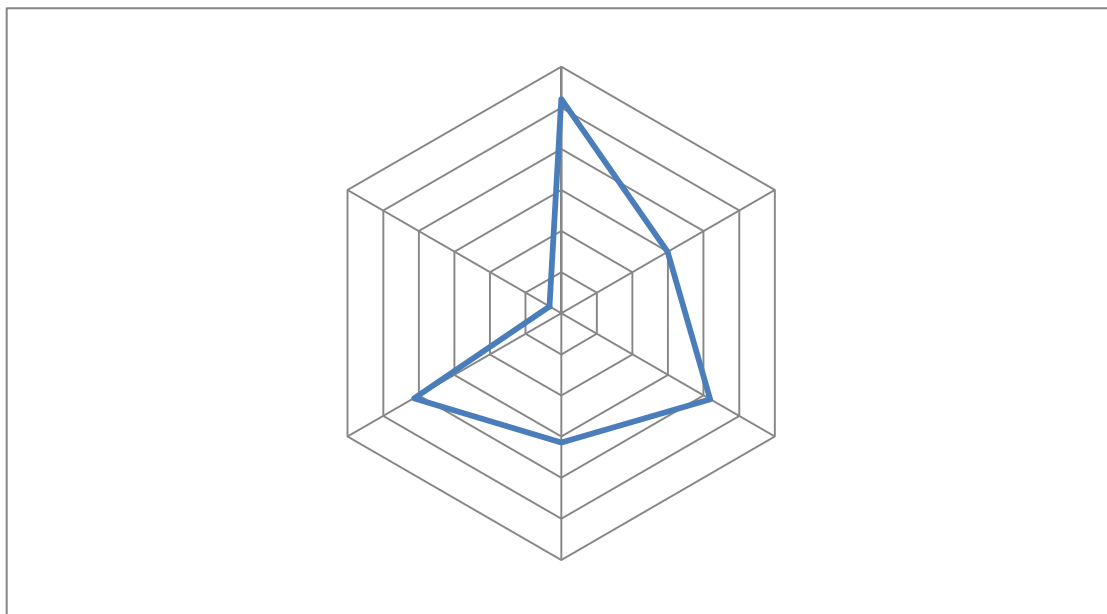
32.28%

9

11

16





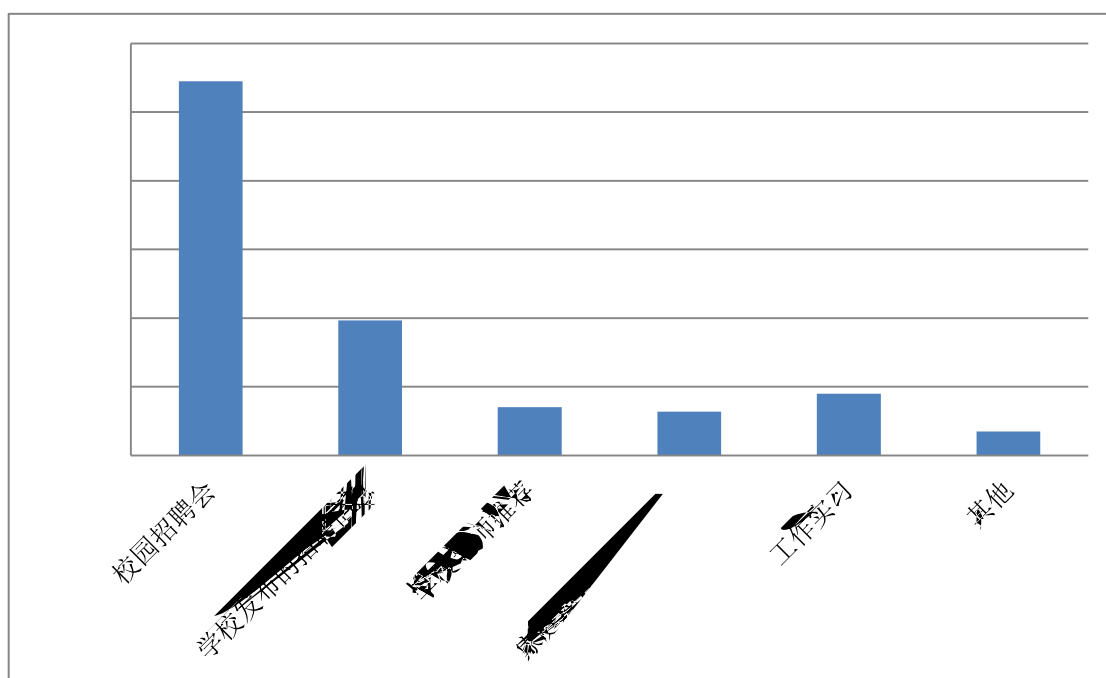
18

54.49%

7.01%

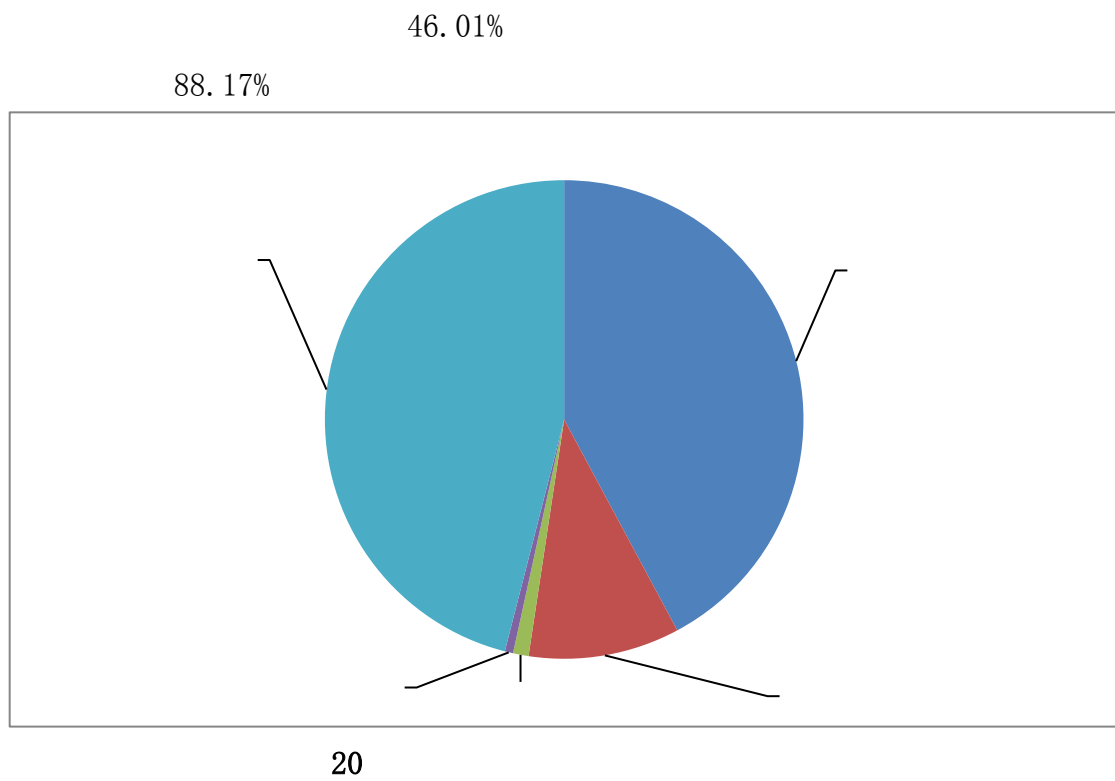
19.66%

81.16%



19







## 第六章 就业特色工作

2015 11

22

2015 9 2016 6

34

13

357

1953 ( 1310 )

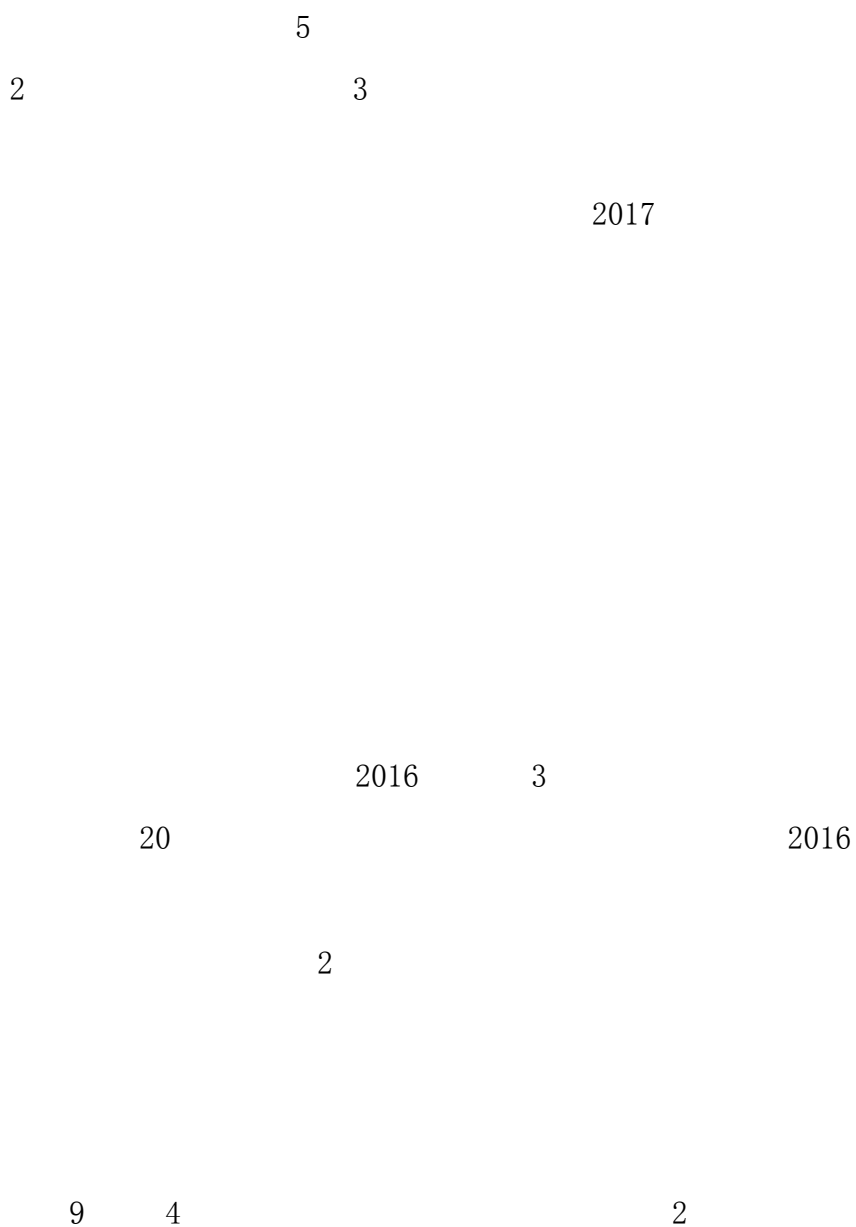
12 2015-2016

1		2015 09 15
2	2015	2015 09 16
3		2015 09 18
4		2015 09 21
5	2016	2015 09 22
6		2015 09 23
7		2015 09 23
8		2015 09 23
9	2016	2015 09 24
10		2015 10 09
11		2015 10 13
12	2016	2015 10 14

---

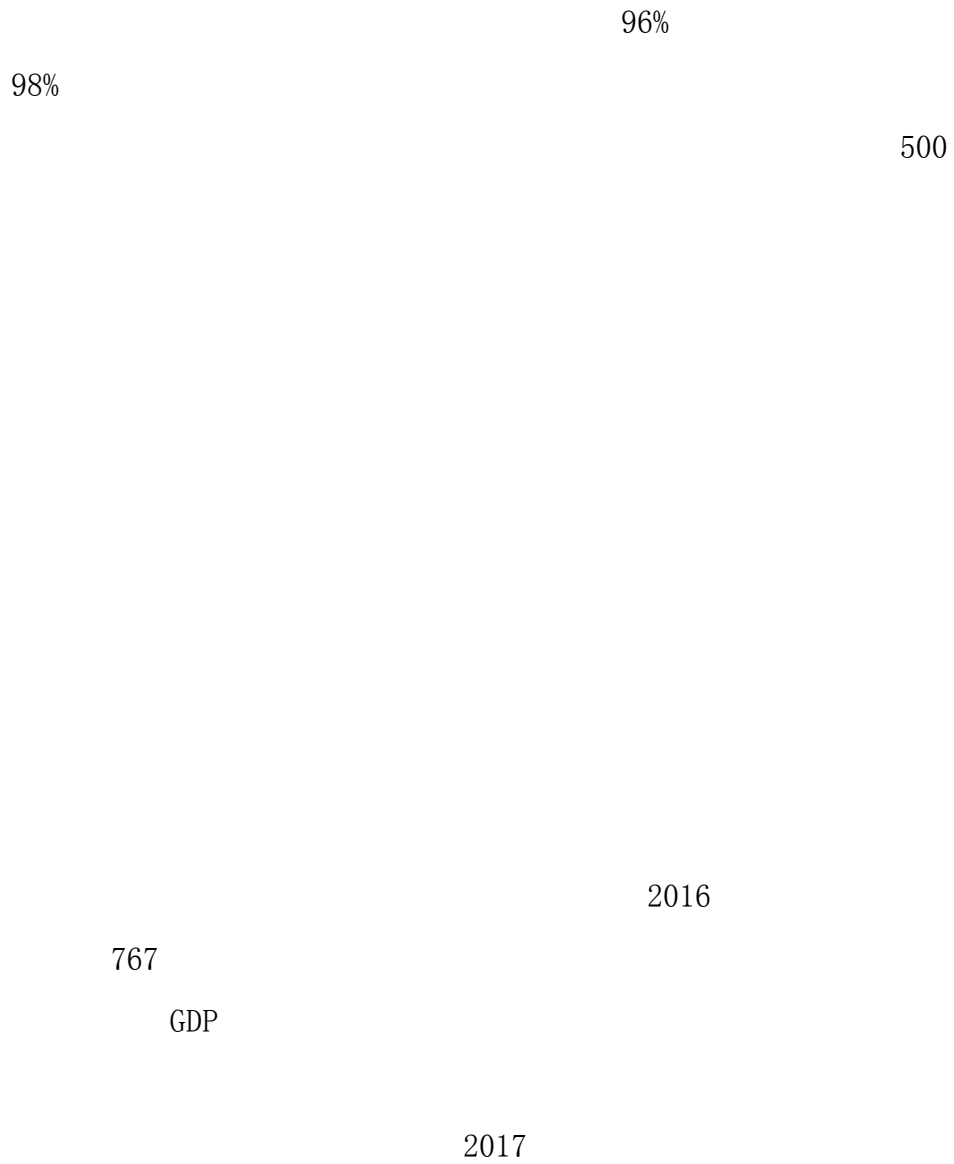
13		2015 10 14
14		2015 10 15
15		2015 10 22
16		2015 10 23
17		2015 10 28
18		2015 10 29
19		2015 11 02

20





## 第七章 就业趋势与反馈





“ - - ”

- -

- -